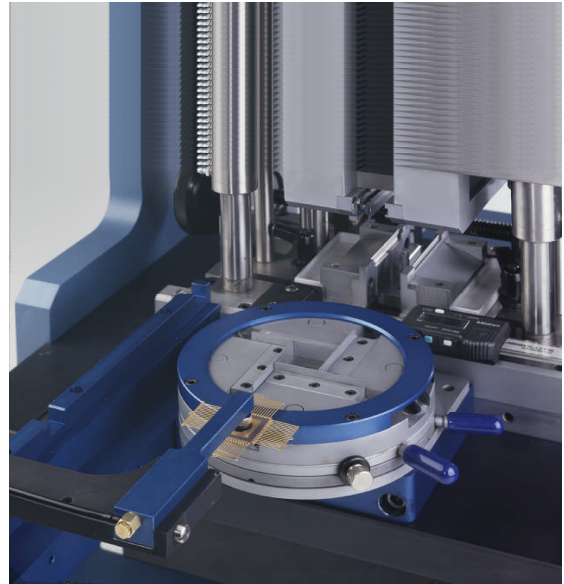


# SMT LEAD FORM & TRIM

# Solutions

## Flex™ Universal Lead Forming System... With Automatic Standoff Control



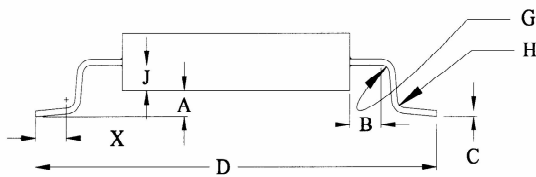
### Features

- Automatic standoff control up to +/- .001" when used with Fancort's electronic floating anvil press
- A2 hardened tool steel and hard chrome plating for enhanced wear and corrosion resistance
- Removable die members for varying the shoulder, foot, radii, and lead material thickness can be easily replaced without removing the tool from the press
- Adjustable tip to tip length using hand wheel with precision ball screw with digital readout and anti-backlash feature
- Optional centering station with manual loader for higher throughput and hands-free operation
- Optional model for plastic packages such as QFPs, TSSOPs, etc., to JEDEC with manual or fixed standoff control, small shoulder and foot
- Patent Number 4,907,628

Fancort's **FLEX™** is a universal gull wing lead forming system engineered to provide maximum versatility along with increased throughput and automatic stand-off control. Simple changeover of four die members, combined with accurate, repeatable changes in tip to tip length, can vary all of the critical dimensions for most SMT footprints and packages *including plastic package and large MCMs*. The following features and options combined with Fancort's strong factory support makes purchasing the **FLEX™** system an easy decision.

# Specifications and Set Up Information

These specifications, drawings, and instructions will explain how the **FLEX™** universal lead forming system can be easily set up to process different components, including flatpacks, quadpacks, axials and MCMs to different footprints by merely changing any of the four die components illustrated and/or adjusting the cutting dimension. The specifications listed are for the standard and large systems. Modifications and custom versions are available.



'A' remains constant regardless of 'J'

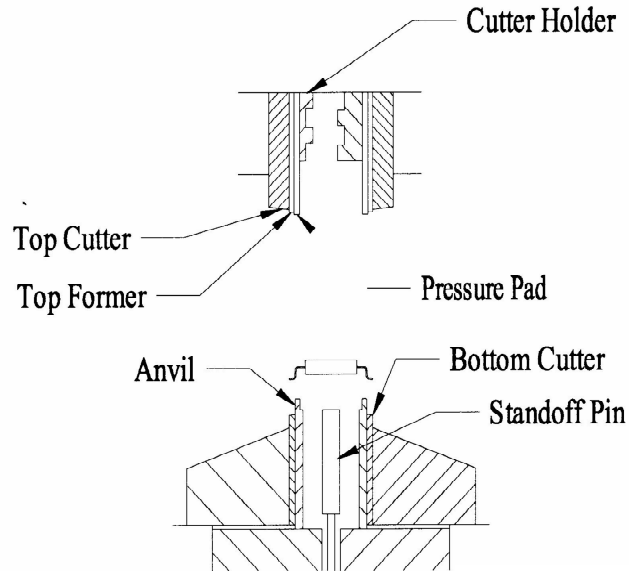
## SPECIFICATIONS

	Standard	Large
Lead Cut Dimension(D)	3.000"max	3.000"max
Body Width	.250"-2.800"	.250"-2.800"
Body Length	2.000"	3.000"
Foot Length(X)*	.025"min	.025"min
Shoulder(B)*	.035"min	.035"min
Standoff(A)	Variable—.200" max	
Heel Radius(H)	.010"min	.010"min
Shoulder Radius(G)	.008"min	.008"min
Lead Exit Position++	.150"max	.150"max

\*Contact the factory for plastic packages to JEDEC configurations  
++ Custom dimensions available

### Set Up Instructions

1. Change tip to tip length (D)...Dial in the dimension using the digital readout
2. Change material thickness (C) and/or heel radius (H)...Change the top formers
3. Change the foot length (X)...Change the bottom cutters, top formers and pressure pads
4. Change the shoulder (B)...Change the anvils and pressure pads if it is less than .040" or more than .080"
5. Change the shoulder radius (G)...Change the anvils
6. Change foot angle...Change bottom cutters and top formers



(Auto Standoff, only)

## SYSTEMS, OPTIONS, & SPARE PARTS

	Standard	Large
<b>Systems:</b>		
• Automatic Standoff Tooling for Small Parts w/press, loader, & centering stage		F1F/2FXSPL
• Automatic Standoff Tooling for Large Parts w/press, loader, & centering stage		F1F/2FXLPL
<b>Automatic Standoff Tooling</b>	F-1F/FLEX-S	F-1F/2FX-S
Air Press	5000-2-5	5000-2-5
<b>Manual Standoff Tooling</b>	F-1A/2FLEX-S	F-1A/2FXS-S
Air Press	5000L	5000L
<b>Plastic Packages Tooling</b>	F-1J/2FLEX-S	F-1J/2FLEX-L
Air Press	5000L	5000L
<b>Options:</b>		
Centering Stage	CS-10 Plus-500M	CS-10 Plus-500M
Manual Loader w/ vacuum		
<b>Interchangeable Parts:</b>		
Bottom Anvils	FLX-N-1S	FLX-N-L
Bottom Cutters	FLX-BC-1S	FLX-BC-1L
Top Formers	FLX-F-1S	FLX-F-1L
Pressure Pads	FLX-PP-1S	FLX-PP-1L
Centering Nest Bottom Brazed	FLX-NEST-CS	FLX-NEST-CS



fancort industries, inc.

LEADING THE WAY IN SMT LEAD FORMING INNOVATIONS