

fancort Industries, Inc.

31 FAIRFIELD PLACE WEST CALDWELL, N. J. 07006 FS NUMBER /527
(973) 575-0610 WWW.FANCORT.COM FAX (973) 575-9234

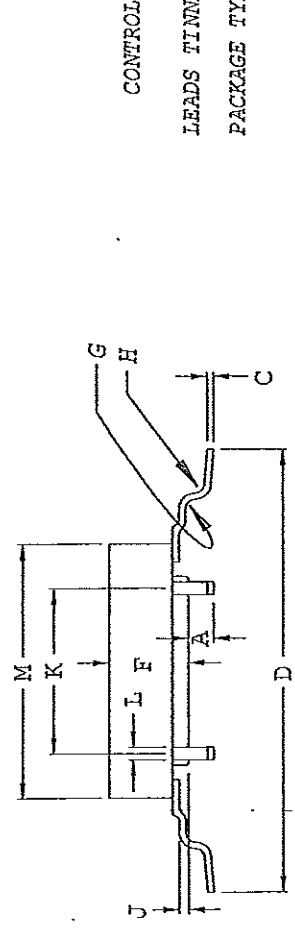
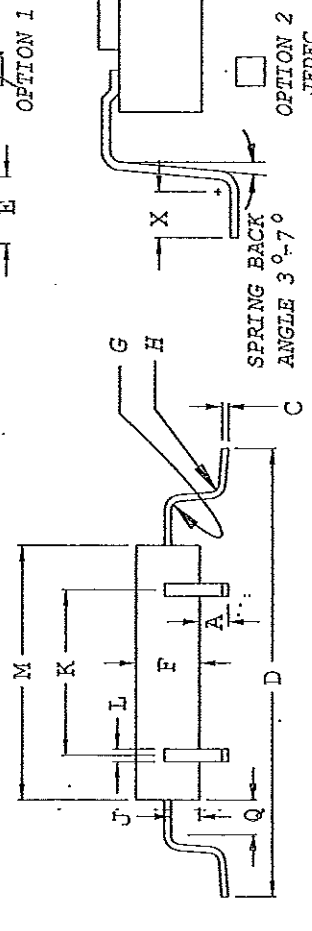
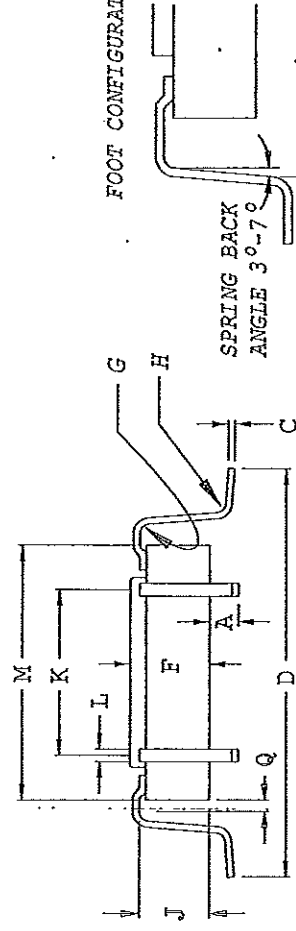
QCI-LFS3

QUAD PACK TEST SHEET

CUSTOMER TI
PART NUMBER SM470R1B1M-HI
INSPECTION SAMPLE () OF ()
DATE

INSPECTED BY

FOOT CONFIGURATIONS



| TEST RESULTS | REQUIRED | | TOL. | | DIN | Y | X | Y |
|--------------|----------|------|------|------|-----|---|---|---|
| | DIN | Y | DIN | Y | | | | |
| A | .008 | .008 | .002 | .002 | | | | |
| C | .008 | .008 | MAX. | | | | | |
| D | .754 | .754 | .010 | | | | | |
| E | .050 | .050 | .005 | | | | | |
| X | | | | | | | | |
| F | .105 | .105 | MAX. | | | | | |
| G | .012 | .012 | .002 | | | | | |
| H | .012 | .012 | .002 | | | | | |
| J | .099 | .099 | REF. | | | | | |
| K | .394 | .394 | TYR. | | | | | |
| L | .008 | .008 | .002 | | | | | |
| M | .544 | .544 | MAX. | | | | | |
| Q | | | | | | | | |

| | | |
|---------------------|-------|-------|
| PITCH | .0197 | .0197 |
| # OF LEADS PER SIDE | 21 | 21 |
| TOTAL # OF LEADS | 84 | 84 |

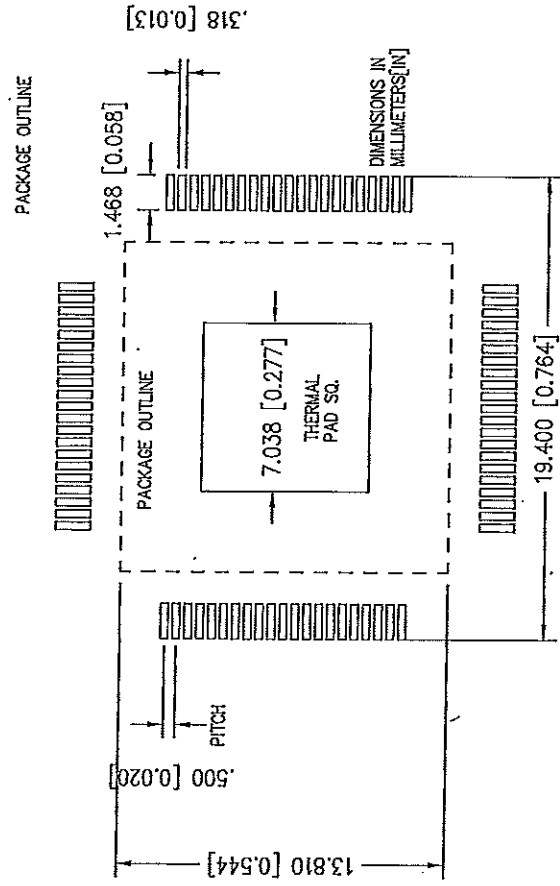
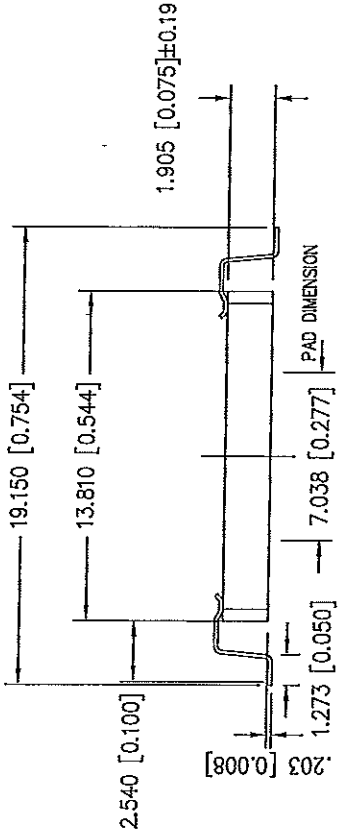
CONTROLLING UNITS ARE [METRIC] INCHES

- LEADS TINNED YES NO
- LEAD TYPE: FLAT ROUND
- PACKAGE TYPE: METAL CERAMIC PLASTIC GLASS SEAL
- TOE: UP DOWN
- ACTUAL TOE: X= Y=



CONTROLLING DOCUMENT

FS: 1488
1475



84 HFQ RECOMMENDED
FORM & FOOTPRINT