

fancort Industries, Inc.

31 FAIRFIELD PLACE

WEST CALDWELL, N. J. 07006

(973) 575-0610

WWW.FANCORT.COM

FAX (973) 575-9234

QUAD PACK SPECIFICATION SHEET

FA NUMBER _____

CUSTOMER _____

PART NUMBER **TI 172QP**

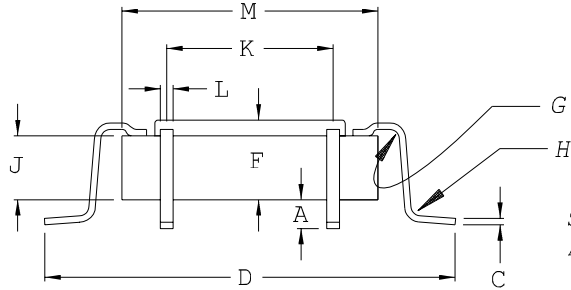
DATE _____

DRAWN BY FANCORT _____

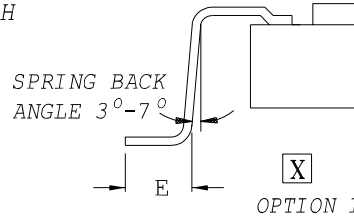
CHECKED BY _____

PACKAGE TYPE

TOP BRAZE



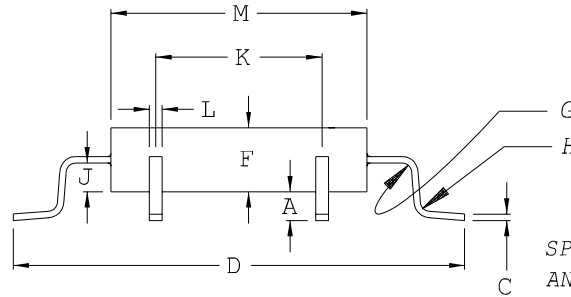
FOOT CONFIGURATIONS



OPTION 1

OPTION 2

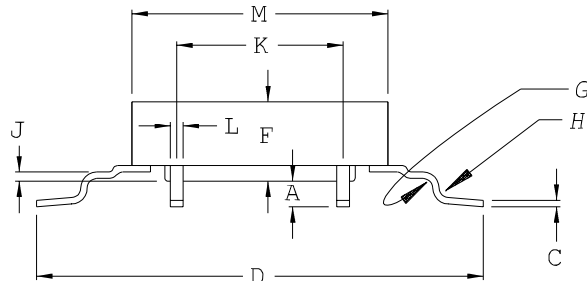
SIDE EXIT



SPRING BACK
ANGLE 3°-7°

OPTION 2
JEDEC

BOTTOM EXIT



	DIM X	DIM Y	TOLERANCE
A	.010	.010	.002
C	.009	.009	MAX
D	1.375	1.375	.010
E	.050	.050	.005
X	---	---	---
F	.130	.130	MAX
G	.012	.012	.002
H	.012	.012	.002
J	.100	.100	.010
K	1.050	1.050	BSC
L	.010	.010	MAX
M	1.165	1.165	MAX
PITCH	.025	.025	
# OF LEADS PER SIDE	43	43	
TOTAL # OF LEADS	172		

CUSTOMER SIGNATURE &
DATE FOR ACCEPTANCE _____

CONTROLLING UNITS ARE [METRIC] INCHES

LEADS TINNED YES NO

LEAD TYPE: FLAT

PACKAGE TYPE: METAL

ROUND

CERAMIC

UP 0°-4°

PLASTIC

DOWN 0°-4°

GLASS SEAL