

fancort Industries, Inc.

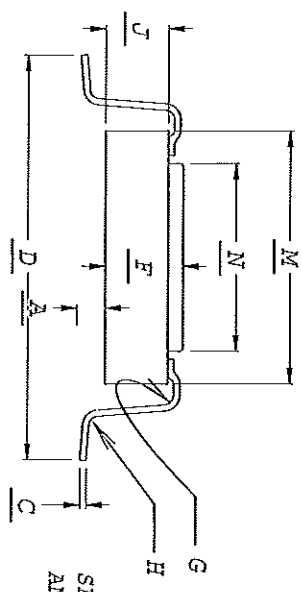
31 FAIRFIELD PLACE
 (973) 575-0610 WWW.FANCORT.COM FAX (973) 575-9234
 WEST CALDWELL, N.J. 07006

FLAT PACK SPECIFICATION SHEET

FA NUMBER _____
 MANUFACTURER PHOTONICS
 PART NUMBER LASER PUMP
 DATE 7/12/11
 DRAWN BY FANCORT BC
 CHECKED BY _____

PACKAGE TYPE

TOP BRAZE



SPRING BACK ANGLE 3°-7°

FOOT CONFIGURATIONS

OPTION 1

OPTION 1

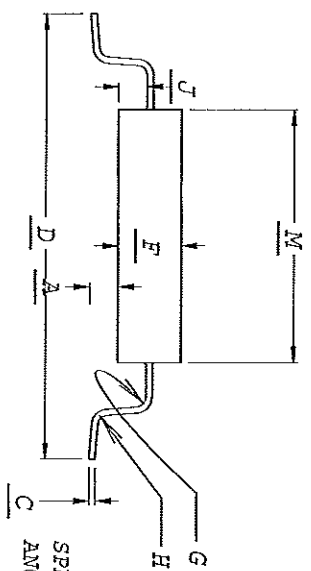
| DIM. | +/- |
|------|-----------|
| A | .000 .002 |
| C | .010 |
| D | .822 .010 |
| E | .050 .005 |
| X | ----- |
| F | .315 MAX |
| G | .016 .002 |
| H | .016 .002 |
| J | .215 .015 |
| M | .602 .020 |
| N | ----- |

OPTION 2

OPTION 2

| PACKAGE LENGTH | Y | 1.181 |
|---------------------|---|-------|
| LEAD WIDTH | L | .020 |
| SPRINT | 1 | .100 |
| * OF LEADS PER SIDE | 7 | |

SIDE EXIT

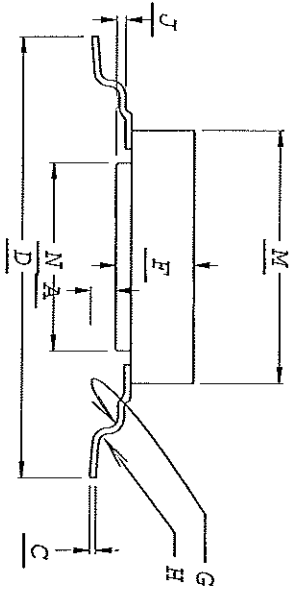


SPRING BACK ANGLE 3°-7°

OPTION 2

OPTION 2

BOTTOM EXIT



CUSTOMER SIGNATURE & DATE FOR ACCEPTANCE _____
 CONTROLLING UNITS ARE METRIC INCHES

LEADS TINNED YES NO
 PACKAGE TYPE: METAL CERAMIC PLASTIC GLASS SEAL
 LEAD TYPE: FLAT ROUND
 TOE UP DOWN
 ANGLE 0° .4°