

# fancort Industries, Inc.

31 FAIRFIELD PLACE

WEST CALDWELL, N. J. 07006

(973) 575-0610

WWW.FANCORT.COM

FAX (973) 575-9234

## FLAT PACK SPECIFICATION SHEET

FS NUMBER \_\_\_\_\_

CUSTOMER NASA

PART NUMBER 69F1608

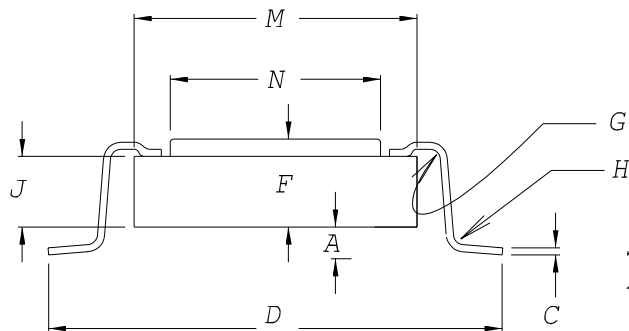
DATE 4/25/07

DRAWN BY FANCORT BC

CHECKED BY \_\_\_\_\_

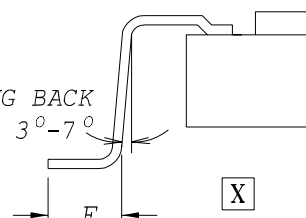
PACKAGE TYPE

TOP BRAZE



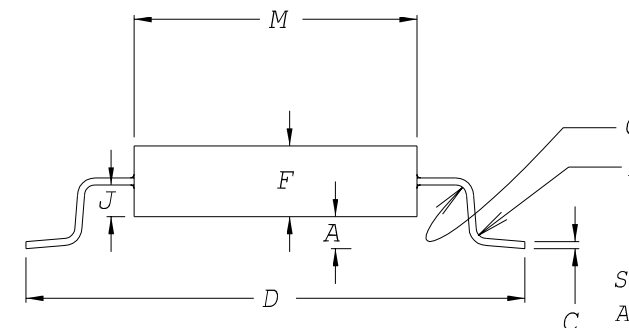
FOOT CONFIGURATIONS

SPRING BACK  
ANGLE 3°-7°

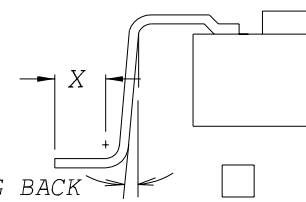


OPTION 1

SIDE EXIT



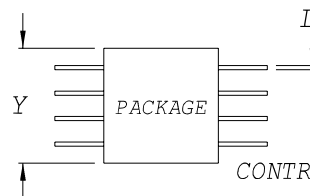
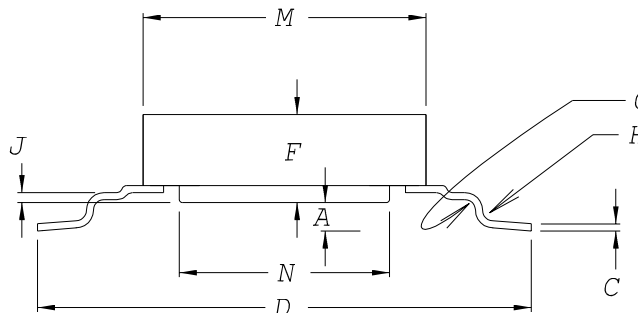
SPRING BACK  
ANGLE 3°-7°



OPTION 2

JEDEC

BOTTOM EXIT



CUSTOMER SIGNATURE &  
DATE FOR ACCEPTANCE \_\_\_\_\_

CONTROLLING UNITS ARE [METRIC ] INCHES

LEADS TINNED  YES  NO

LEAD TYPE: FLAT

PACKAGE TYPE: METAL

ROUND

CERAMIC

TOE UP  0°-4°

PLASTIC

DOWN  0°-4°

GLASS SEAL

	DIM.	TOLERANCE
A	.020	.005
C	.010	MAX
D	1.410	.010
E	.060	.005
OPTION 1		
OPTION 2	-----	-----
F	.336	MAX
G	.012	.002
H	.016	.002
J	.248	MAX
M	1.148	MAX
N	1.000	MAX
PACKAGE LENGTH	Y	.830 MAX
LEAD WIDTH	L	.018 MAX
PITCH		.050
# OF LEADS PER SIDE		12