

fancort Industries, Inc.

31 FAIRFIELD PLACE

WEST CALDWELL, N. J. 07006

(973) 575-0610

WWW.FANCORT.COM

FAX (973) 575-9234

QUAD PACK SPECIFICATION SHEET

FA NUMBER _____

CUSTOMER _____

PART NUMBER Maxwell 48 lead QP

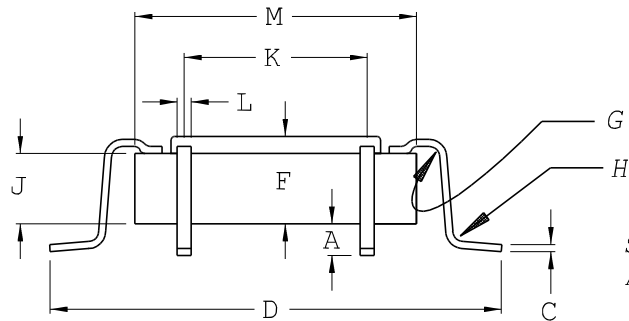
DATE _____

DRAWN BY FANCORT _____

CHECKED BY _____

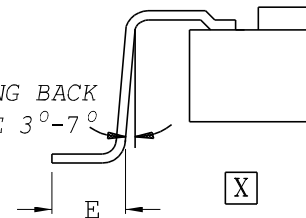
PACKAGE TYPE

TOP BRAZE



FOOT CONFIGURATIONS

SPRING BACK
ANGLE 3°-7°

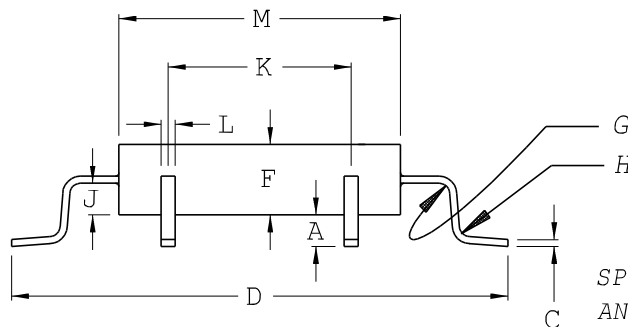


OPTION 1

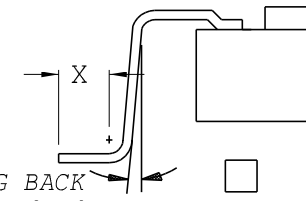
OPTION 1

OPTION 2

SIDE EXIT



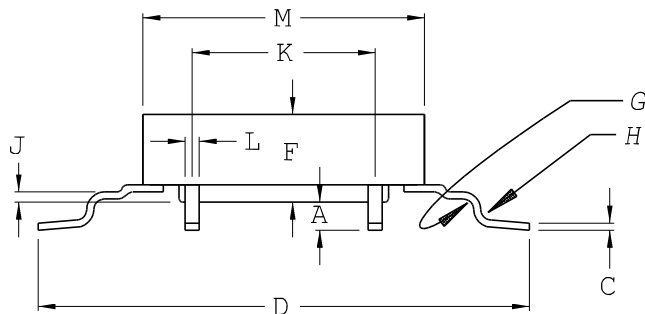
SPRING BACK
ANGLE 3°-7°



OPTION 2
JEDEC

	DIM. X	DIM. Y	+/-
A	.010	.010	.002
C	.008	.008	.002
D	.865	.865	.010
E	.050	.050	.005
F	.149	.149	MAX
G	.012	.012	.002
H	.012	.012	.002
J	.100	.100	.007
K	.275	.275	.005
L	.012	.012	MAX
M	.650	.650	.005
PITCH	.025	.025	
# OF LEADS PER SIDE	12	12	
TOTAL # OF LEADS	48		

BOTTOM EXIT



CUSTOMER SIGNATURE &

DATE FOR ACCEPTANCE _____

CONTROLLING UNITS ARE [METRIC] INCHES

LEADS TINNED YES NO

LEAD TYPE: FLAT

PACKAGE TYPE: METAL

ROUND

CERAMIC

TOE UP 0°-4°

PLASTIC

DOWN 0°-4°

GLASS SEAL