

fancort Industries, Inc.

31 FAIRFIELD PLACE
(973) 575-0610

WEST CALDWELL, N.J. 07006

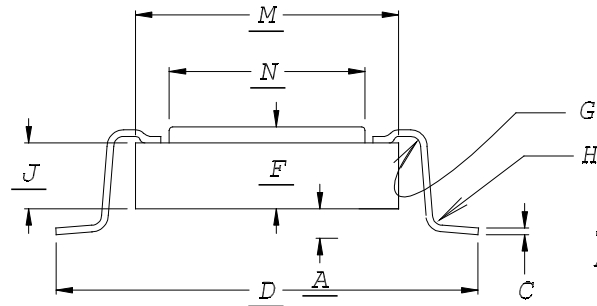
WWW.FANCORT.COM FAX (973) 575-9234

FLAT PACK SPECIFICATION SHEET

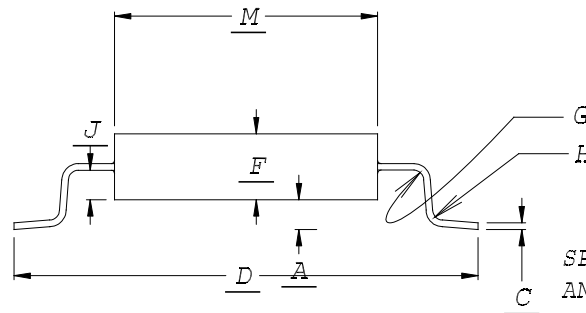
FA NUMBER _____
 MANUFACTURER MAXWELL
 PART NUMBER 54BCT244
 DATE 12/17/09
 DRAWN BY FANCORT BC
 CHECKED BY _____

PACKAGE TYPE

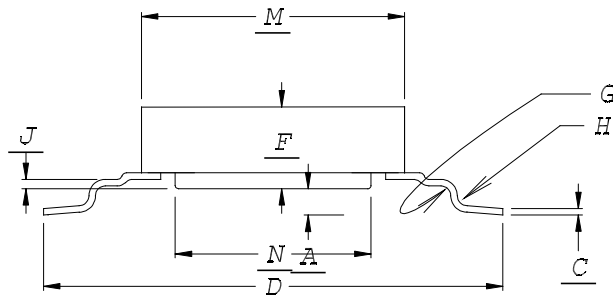
TOP BRAZE



SIDE EXIT

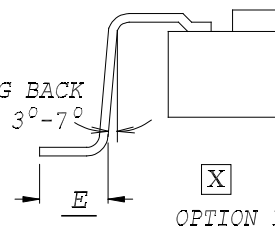


BOTTOM EXIT



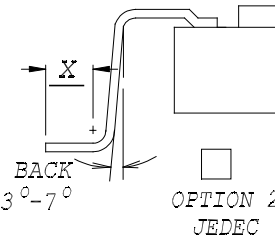
FOOT CONFIGURATIONS

SPRING BACK
ANGLE 3°-7°

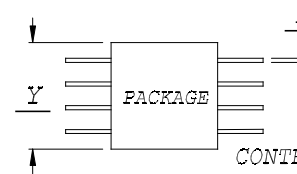


OPTION 1

SPRING BACK
ANGLE 3°-7°



OPTION 2
JEDEC



CUSTOMER SIGNATURE &
DATE FOR ACCEPTANCE _____

CONTROLLING UNITS ARE [METRIC] INCHES

LEADS TINNED YES NO

LEAD TYPE: FLAT

PACKAGE TYPE: METAL

ROUND

CERAMIC

TOE UP 0°-4°

PLASTIC

DOWN 0°-4°

GLASS SEAL

	DIM.	TOLERANCE
A	.020	.002
C	.009	MAX
D	.510	.010
E	.050	.005
OPTION 1		
OPTION 2		
F	.154	MAX
G	.010	.002
H	.010	.002
J	.039	+0.003/-0.004
M	.303	MAX
N	.160	NOM
PACKAGE LENGTH	Y	.490 MAX
LEAD WIDTH	L	.022 MAX
PITCH		.050
# OF LEADS PER SIDE		10