



# World Leader in SMT Lead Forming Solutions

FLEX Form and Trim System  
Flat Packs and Quad Packs

31 Fairfield Place, West Caldwell, NJ 07006

[www.fancort.com](http://www.fancort.com) 973-575-0610

**SMT  
LEAD FORM  
& TRIM**

*Solutions*

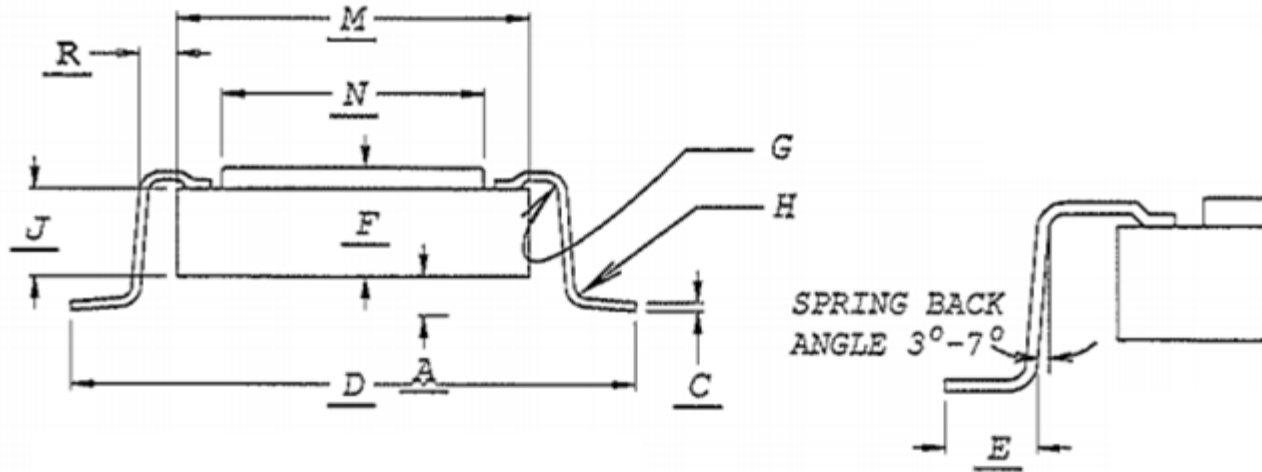
---

**Flex™**

**Universal Lead Forming System...  
With Automatic Standoff Control**

- Adjustable tip-to-tip length using hand wheel and precision ball screw with digital readout and anti-backlash feature
- Simple changeover of four die members to vary all critical dimensions for most SMT footprints and packages, including plastic packages and large packages
- Automatic Standoff Control with patented, electronic floating anvil design
- Floating Anvil sequence of operation
- Centering station with manual loader for higher throughput and hands-off operations
- View the Two-Sided Universal Lead Forming System Quad & Flat Pack Specifications Sheet on our website
- Download the Flex brochure (PDF) from our website
- For Quads: Tie Bars and/or Tie Bar Corners need to be removed prior to using the FLEX
- The Flex System is the most accurate and adjustable tool we make. See our website for flex limitations.
- Plated to prevent rusting.

# Typical FOOT CONFIGURATION



	Flatpack		Mil-Std-1835
	Dimension	Tolerance	
G	.010	.002	.010 min
R	.055	.005	.013 min
A	.015	.002	.022 to .038
H	.010	.002	.011 to .017
E	.035 - .055	.005	.022 to .028

**DESCRIPTION**

**REMARK**

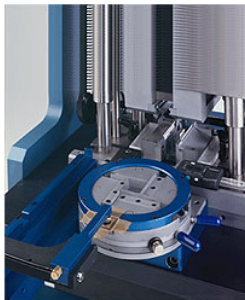
**COST**

F-1F/2FXSPL complete flex system, including electronic floating anvil press, Flex tool and manual loader and external centering station

- FLEX two-sided form and trim tool Model F-1F/2FXS
- Model 5000-2-5L Floating Anvil Air Press
- CS-10 Centering Stage
- PLUS-500M Manual Loader with vacuum pick up.

A typical system will come supplied as follows: "E" foot .055, "G and H" Radius .010 , "A" standoff height .015, (that is adjustable ) "R" min shoulder that will be adjustable from .035 - .055 typical System will handle most flat packs and quads, please see the FLEX limitation page on our web site , Tie bars need to be removed prior to using this system on Quad packs , This can be by hand or with tool F-3A . Bottom brazed parts will require an external centering nest.

Please ask for a quote



Part has been placed into the centering stage by the operator.



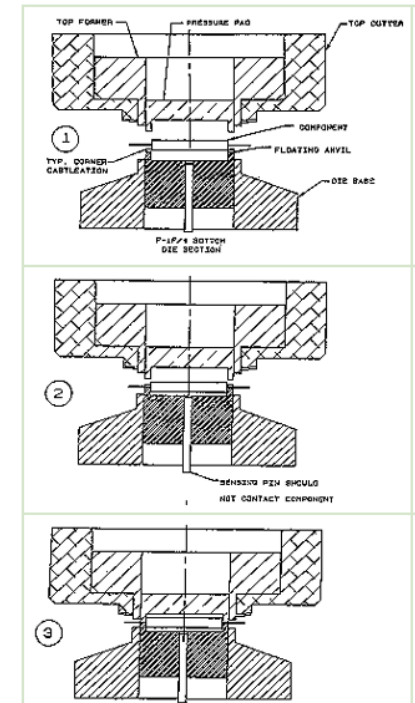
Part is lifted from the centering stage with the vacuum arm by the operator.



Perfectly center part is placed into the tool using the vacuum arm.



**Floating Anvil: Sequence of Operation**



DESCRIPTION	REMARK	COST
International Crating	Special Treated Wooden Crate for International Shipments Certification # US604HT	Please ask for a quote



Part has been placed into the centering stage by the operator.

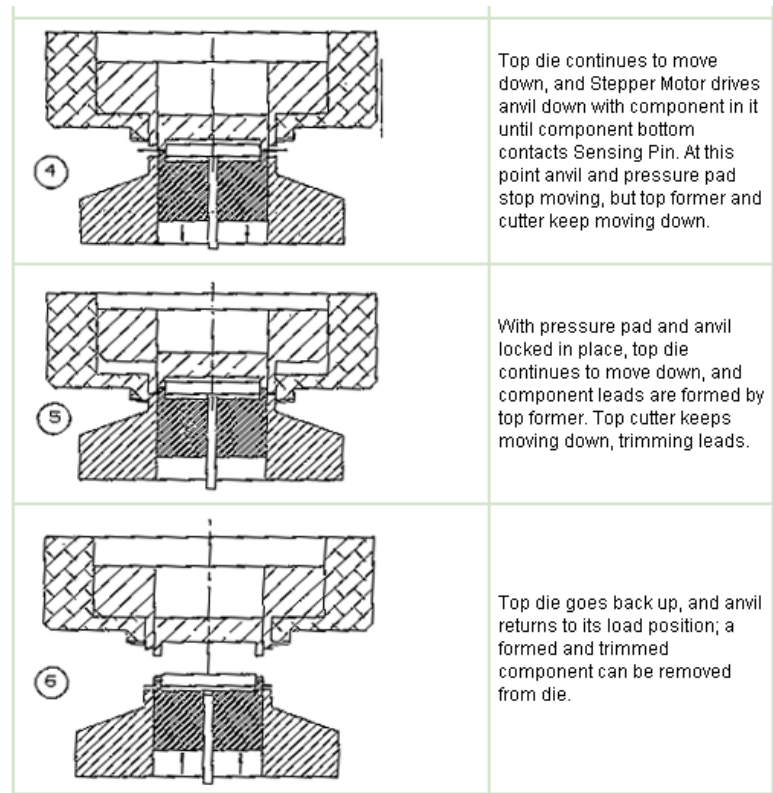


Part is lifted from the centering stage with the vacuum arm by the operator.



Perfectly center part is placed into the tool using the vacuum arm.

DESCRIPTION	REMARK	COST
F-3A	Universal tine bar cutter to remove the tie bars on the 52 lead quad and other similar parts	Please ask for a quote
5000L bench air press for F-3A	Tie bar cutter and any other dedicated tools you buy from us in the future.	Please ask for a quote



DESCRIPTION	REMARK	COST
C1-1	Coplanarity inspection Mirror	Please ask for a quote
HP-100	Heavy duty vacuum pen w/ 3 pickup tips	Please ask for a quote
HC-1	Standoff measuring tool "A" dimension	Please ask for a quote
AMT-6X12QP	Adjustable shipping trays, quad packs	Please ask for a quote
AMT-6X12FP	Adjustable shipping trays, flat packs	Please ask for a quote
AMT-6X12QP-B	Adjustable shipping trays, quad packs BOTTOM Brazed option	Please ask for a quote

