



fancort industries, inc. TM

Model FFB-100

Overview

Recirculating fume extraction is now extremely important with the rising concern for our environment and employee safety. Fancort Fume Extractors provide not only a flexible and portable process for plant redesigns and expansions, but also a more stable process by providing a controlled airflow to remove harmful fumes. All this while eliminating the added costs of building modifications, increased air handling systems and lost energy.

Features

- ▶ Automatic Flow Control maintains constant extraction rate.
- ▶ Adjustable Air Flow extends filter life.
- ▶ Blocked Filter Warning.
- ▶ Easy to change filters.
- ▶ Quiet operation.
- ▶ Welded stainless steel construction.
- ▶ Reverse Air Flow prevents condensation and extends filter life.
- ▶ Continuous run brushless motors.
- ▶ HEPA filtration removes 99.997% of particles down to .3 microns.
- ▶ Gas and particle sensors on exhaust.
- ▶ Filter Blocked Monitor.
- ▶ Remote Machine Interface.
- ▶ Low energy consumption



Model FFB-100

Power Switch w/
Indicator Light

Variable Speed
Control





Filter Status
Indicator



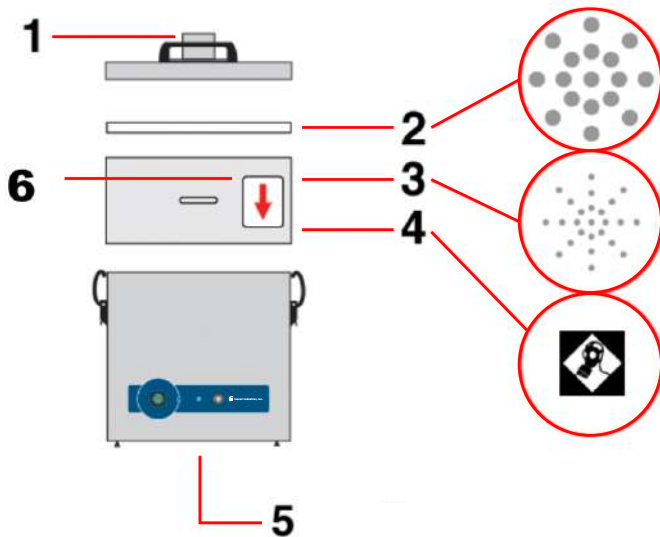
fancort industries, inc. TM

Model FFB-100

Main Filter Options		
	HEPA/Chemical	110531
	Chemical	110532
	HEPA/Chemical Cleanroom*	110533
*Use in combination with F8/F9 Prefilter		

Pre-Filter Options		
	F5 40-60% efficient 3-5 μ	200314
	F8/F9 Composite >95% eff .5-1 μ	200098

	FFB-100	
Model	070363	070362
Voltage (50hz/60hz)	120v (1ph)	230v (1ph)
Wattage	.3 kW	.3 kW
Airflow	377 cfm (640 m ³ /Hr)	
Vacuum	2.5 inwg (.62 kPa)	
Air Inlet	75mm	
Sound Rating	58 dBA	
Dimensions (L/W/H)	16.75in x 16.5in x 14in	
Weight	25 lbs	



- 1) Dual Air inlet.
- 2) Pre-filter.
- 3) Main filter (HEPA Location).
- 4) Main filter (Carbon Location).
- 5) Clean air return.
- 6) Filter I.D. label.

www.fancort.com
 31 Fairfield Place West Caldwell, NJ 07006
 sales@fancort.com
 (P) 1.888.FANCORT
 (P) 973.575.0610