



ELECTRONIC PRODUCTION SPECIALISTS SINCE 1973

FC300

HIGH FLOW STAINLESS STEEL NEEDLE VALVE

VALVE SPECIFICATIONS

Dimensions:

201 mm x 29.21 mm x 29.21 mm
(7.9 in x 1.15 in x 1.15 in)

Weight:

19 oz

Viscosity Range:

1 cps – Paste

Operating Air Pressure:

60 – 100 psi

Maximum Inlet Fluid Pressure:

3500 psi

Wetted Components:

Stainless steel, Viton, Teflon[®]

The FC300 is a versatile high flow dispensing valve for any single component bead, dot, potting, or encapsulation project. Featuring a lightweight, compact design, the FC300 is perfect for both automated and handheld processes in which a high volume of material is dispensed.

The FC300 has many integrated features including:

- ▲ Divorced valve design prevents material contamination of the air section
- ▲ Stainless steel fluid body for superior material compatibility
- ▲ 1/4" NPT fluid port allows higher flow rates
- ▲ Adjustable flow control
- ▲ Spring-assisted valve closure for reliable cycle stops
- ▲ Compatible with all Luer-LokTM needle tips

The FC300 is available on all new PVA3000TM, PVA650TM, PVA350TM, and PVA250TM systems, or can be retrofitted to any existing Fancort platform. For more information on Fancort's dispensing capabilities, please contact one of our sales representatives at 1-888-326-2678

Fancort also offers the following products to improve your dispensing application:

FC3-SP

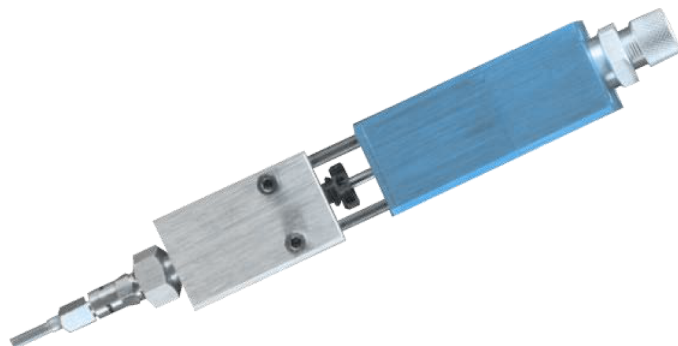
FC300 spare parts kit

FC100-MC

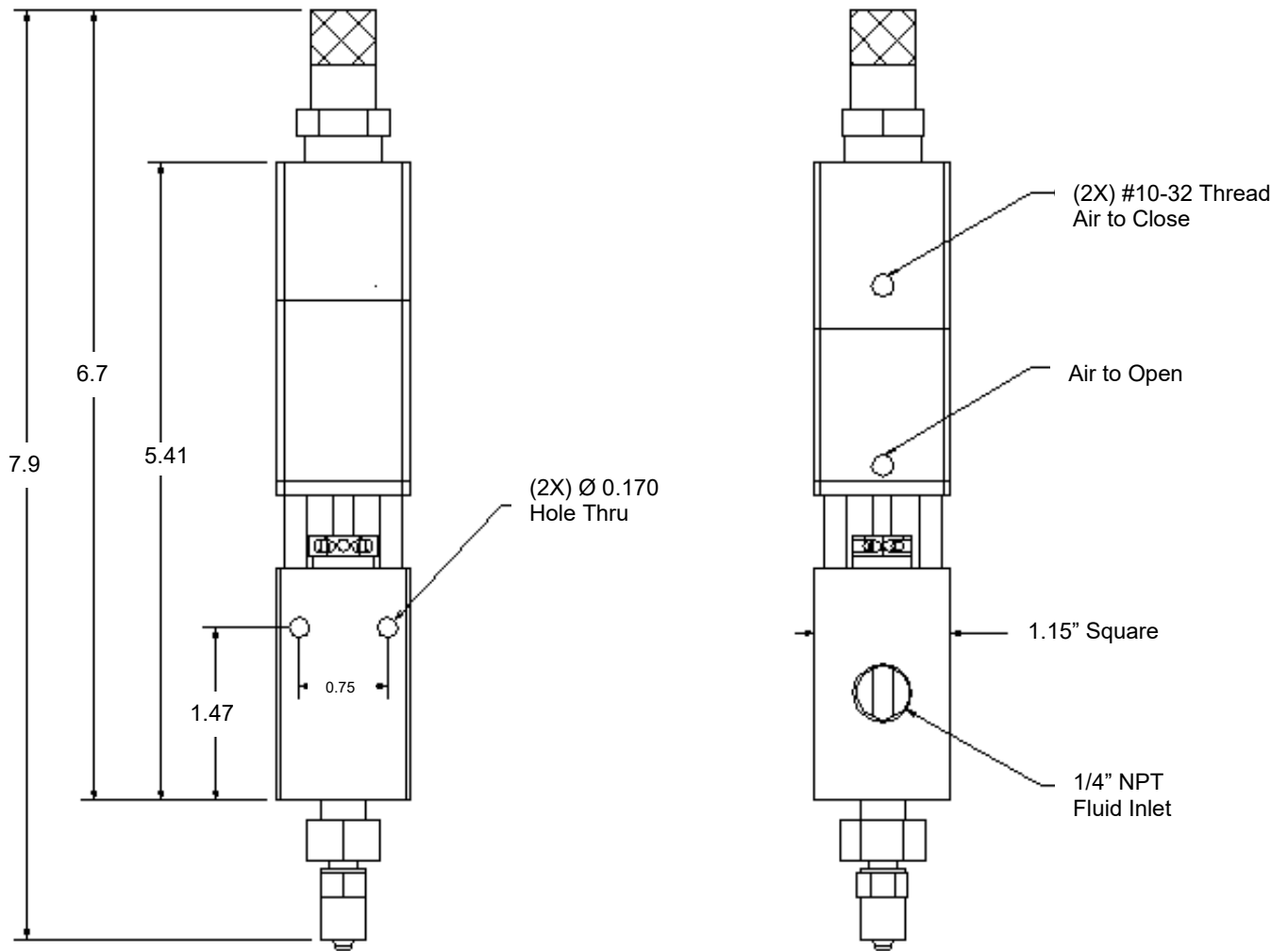
Stainless steel front closing needle valve

ST100

Digital valve controller



FC300 Mounting Dimensions



All dimensions provided in inches